

Definitions

Interconnection is the activation of any one smoke alarm causes alarm activation of all other required smoke alarms within the unit.

A **smoke alarm** is a single or multiple station alarm responsive to smoke and not connected to a monitoring system.

A **smoke detector** is a system-connected smoke sensing device tied to a fire alarm control panel or a household fire warning panel.

Disclaimer

Additional smoke alarms or smoke detectors may be required by the Code Official. Code Administration recommends AC primary with battery backup smoke alarms in all units and structures.

This publication is intended to be a guide to assist in answering general inquiries. This publication does not include all aspects of the relevant codes. Code requirements vary depending on numerous factors. For specific questions, please contact Code Administration.

Permits

All work expect minor repairs must be done under permit. All electrical, heating, and plumbing work should be done by licensed contractors under permit. Applications for permits may be obtained through the Permits office on the 3rd floor of City Hall.

Phone: 301-739-8577, Ext. 103

Fax: 301-791-2650

Email: codecompliance@hagerstownmd.org

January 2020



Planning and Code Administration Department
One East Franklin Street, Suite 300
Hagerstown, Maryland 21740

Smoke Alarms



Requirements



1 E. Franklin St. Suite 300
Hagerstown, MD 21740
301-790-4163

Smoke Alarms

Location Requirements

Smoke alarms shall be installed on every level of a structure including basements.

Smoke alarms are NOT required in non-habitable attics and crawl spaces.

Built prior to January 1, 2001:

Smoke alarms shall be installed and maintained in the area of the bedrooms.

Built after January 1, 2001:

Smoke alarms shall be installed and maintained in the area of the bedrooms and in each bedroom.

Other Requirements

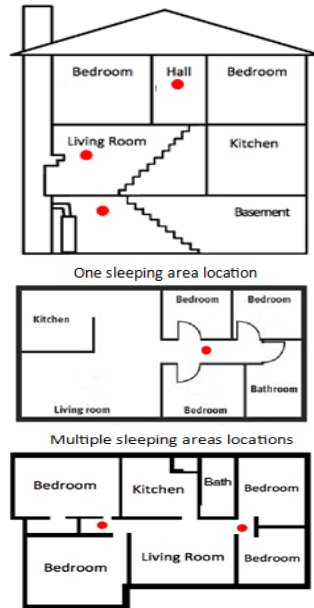
Smoke alarms and smoke detectors shall not be installed within a 36 inches horizontal path from a door to a bathroom containing a shower or tub unless listed. [2016 NFPA 72 29.8.3.4.(6)]

Smoke alarms and smoke detectors shall not be installed within a 36 -inches horizontal path from the supply registers of a forced air heating or cooling system and shall be installed outside of the direct airflow from those registers. [2016 NFPA 72 29.8.3.4.(7)]

Smoke alarms and smoke detectors shall not be installed within 36 inches horizontal path from the tip of the blade of a ceiling suspended (paddle) fan.[2016 NFPA 72 29.8.3.4(8)]

For stairways leading up from a basement, a smoke alarm or smoke detector shall be located on the basement ceiling near the entry to the stair. [2016 NFPA 72 29.8.3.4.(10)]

Smoke alarms or smoke detectors shall be installed within 21 feet of any door to a sleeping room, with the distance measured along a path of travel. [2016 NFPA 72 29.5.1.1]



Power Requirements

One and Two unit Dwellings

Structures built before July 1, 1975 shall have a 10 year lithium battery powered smoke alarms or combination alarms that are sealed and tamper-resistant.

Structures built between July 1, 1975 and June 30, 1990, shall have an AC primary smoke alarms or combination alarms.

Structures built on or after July 1, 1990 shall have an AC primary with battery backup smoke alarms or combination alarms.

Three Unit Dwelling

Option 1 – Install 10 year lithium battery power smoke alarms on every level, outside each separate sleeping area in the immediate vicinity of the bedrooms and in each bedroom, or

Option 2 – Install AC primary with battery backup smoke alarms on every level, in each dwelling unit outside each separate sleeping area in the immediate vicinity of the bedrooms.

Four or more unit Dwellings

All four or more unit dwellings shall have AC primary with battery back-up smoke alarms or smoke detectors.

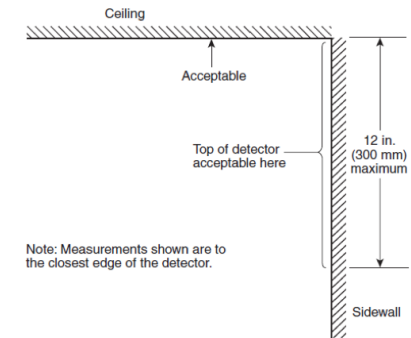
Interconnection

Structures built on or altered after January 1, 1989 shall have interconnection of smoke alarms, smoke detectors and combination alarms.

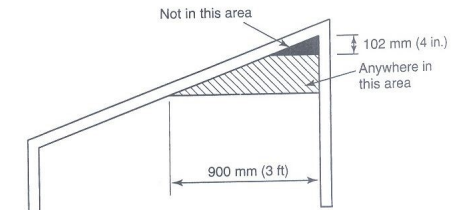
A Code Official may require interconnection of alarms on structures built prior to January 1, 1989 if substandard aspects of the building warrant such a measure to protect public health, safety and welfare.

Mounting Requirements

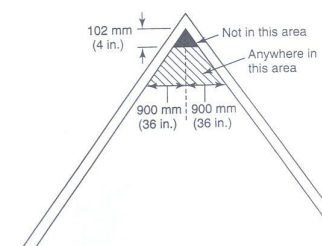
Wall mounted smoke alarms or smoke detectors mounted on walls shall be located not further than 12 inches from the adjoining ceiling surface.



Sloped ceiling smoke alarms mounted on a ceiling greater than 1 foot 8 inches horizontally shall be located within 36 inches of the high side of the ceiling, but not closer than 4 inches from the adjoining wall surface.



Peaked Ceiling Smoke alarms shall be located within 36 inches horizontally of the peak, but not closer than 4 inches vertically to the peak.



Basement smoke alarms shall be mounted on the bottom of a solid beam or joist.