

Definitions:

A **carbon monoxide alarm** means a device that senses carbon monoxide; when sensing carbon monoxide, is capable of emitting a distinct and audible sound; and is listed and carries the listing of a nationally recognized testing laboratory approved by the Office of the State Fire Marshal.

Disclaimer

This publication is intended to be a guide to assist in answering general inquiries. This publication does not include all aspects of the relevant codes. Code requirements vary depending on numerous factors. For specific questions, please contact Code Administration.

Permits

All work expect minor repairs must be done under permit. All electrical, heating, and plumbing work should be done by licensed contractors under permit. Applications for permits may be obtained through the Permits office on the 3rd floor of City Hall.

Phone: 301-739-8577, Ext. 103
Fax: 301-791-2650
Email: codecompliance@hagerstownmd.org

January 2020

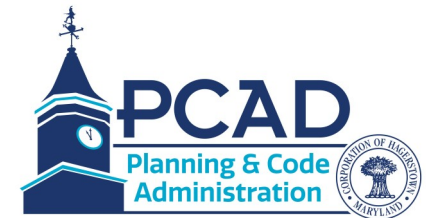


Planning and Code Administration Department
One East Franklin Street, Suite 300
Hagerstown, Maryland 21740

Carbon Monoxide Alarms



Requirements

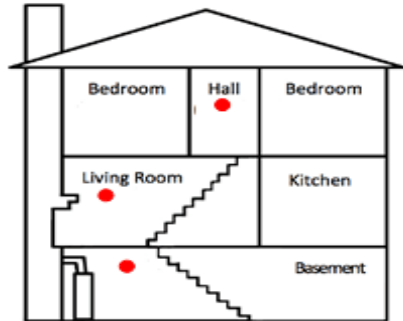


1 E. Franklin St. Suite 300
Hagerstown, MD 21740
301-790-4163

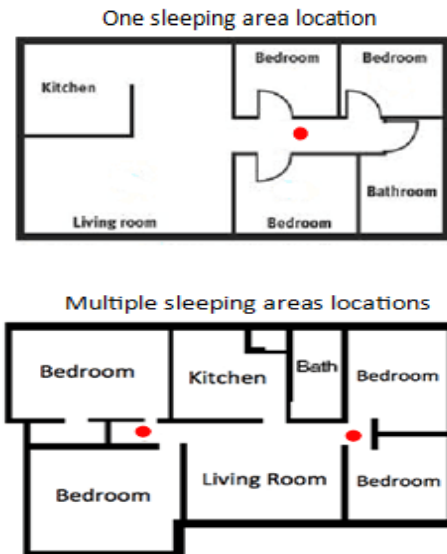
Carbon Monoxide Alarms

Location Requirements

Carbon Monoxide alarms shall be installed on every level of a structure including basements.



Carbon Monoxide alarms shall be installed and maintained in the area of the bedrooms and on each level.



Power Requirements

All structures shall meet one of the following power sources requirements:

- 10 year lithium battery powered carbon monoxide alarms that are sealed and tamper-resistant
- AC primary with battery backup carbon monoxide alarms
- Alarms connected to an on-site control unit that monitors the carbon monoxide alarms remotely

Mounting Requirements

All carbon monoxide alarms shall be mounted in accordance with the manufacturers installation instructions.

Combination Alarms

A single or multiple station device that detects visible or invisible products of combustion including a built-in internal alarm signal and the same single or multiple station device that also senses carbon monoxide and is capable of emitting a distinct and audible sound.

Listing Requirements

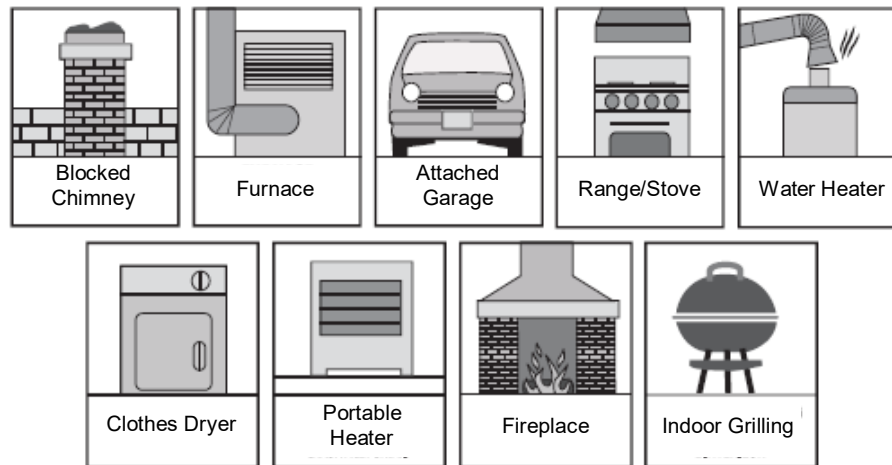
All carbon monoxide alarms shall be in compliance with UL2034 or UL 2075.

All combination alarms shall be in compliance with UL217 or ANSI/UL268 and UL2034 or UL 2075.

Other Requirements

Additional carbon monoxide alarms may be required by the Code Official.

POTENTIAL SOURCES OF CO



Fossil Fuels are:

- Natural Gas
- Propane
- Oil
- Coal