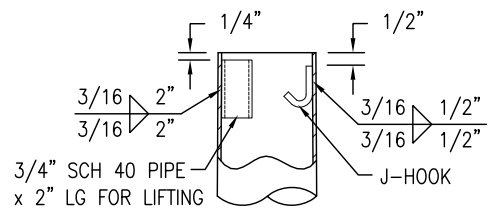


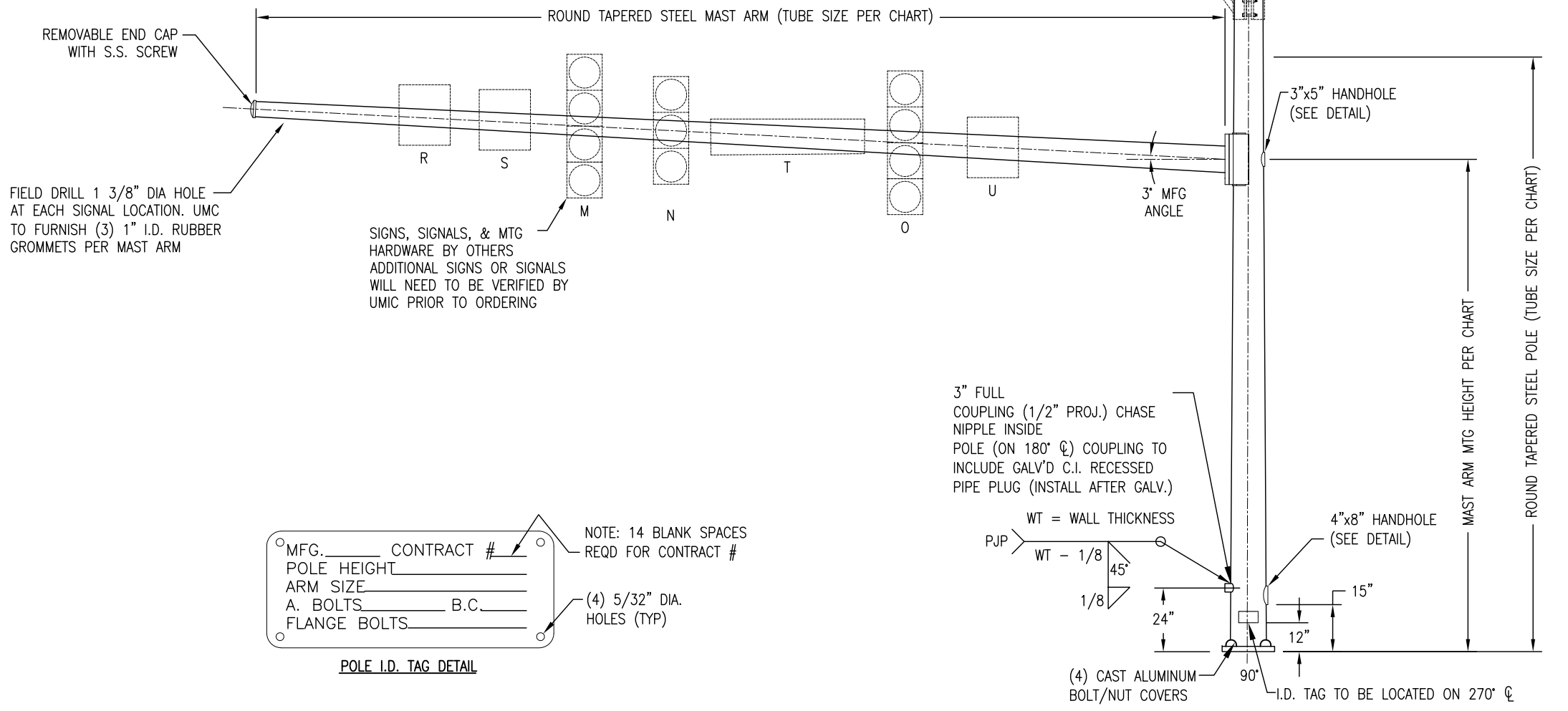
UMC DESIGN NUMBER	MAST ARM DATA				POLE TUBE SIZE	SIGNALS			SIGNS				
	SPAN	TUBE SIZE	MTG HGT	ORIENT		W	M	N	O	R	S	T	U
50300-B1217-Y1 SINGLE	36'-0"	3Ex11.00x5.96x36'-0"	18'-0"	180°	0Ex13.00x9.22x27'-0"	W	74	60	74	37.5	37.5	30	37.5
						A	4	3	4	7.5	7.5	6	7.5
						D	24	20	12	30	27	17	6
50300-B1217-Y2 TWIN	36'-0"	3Ex11.00x5.96x36'-0"	18'-0"	180°	0Ex13.00x9.22x27'-0"	W	74	60	74	37.5	37.5	30	37.5
						A	4	3	4	7.5	7.5	6	7.5
	36'-0"	3Ex11.00x5.96x36'-0"	18'-0"	90°	0Ex13.00x9.22x27'-0"	W	74	60	74	37.5	37.5	30	37.5
						A	4	3	4	7.5	7.5	6	7.5
						D	24	20	12	30	27	17	6

3 GA = 0.250" WALL THICKNESS
 0 GA = 0.313" WALL THICKNESS
 E = ROUND TAPERED STEEL TUBE @ 0.14 in/ft TAPER



TOP OF POLE DETAIL
 ORIENTATION OF PIPE &
 J-HOOK AS REQUIRED

W = WEIGHT (lb)
 A = AREA (sq ft)
 D = DISTANCE FROM POLE (FT)
**** POLES WITH LOADINGS THAT EXCEED THE ABOVE PARAMETERS WILL HAVE TO BE REEVALUATED BY UMIC**



FIELD DRILL 1 3/8" DIA HOLE AT EACH SIGNAL LOCATION. UMC TO FURNISH (3) 1" I.D. RUBBER GROMMETS PER MAST ARM

SIGNALS, SIGNALS, & MTG HARDWARE BY OTHERS. ADDITIONAL SIGNALS OR SIGNALS WILL NEED TO BE VERIFIED BY UMIC PRIOR TO ORDERING

POLE I.D. TAG DETAIL

NOTE: 14 BLANK SPACES REQD FOR CONTRACT #

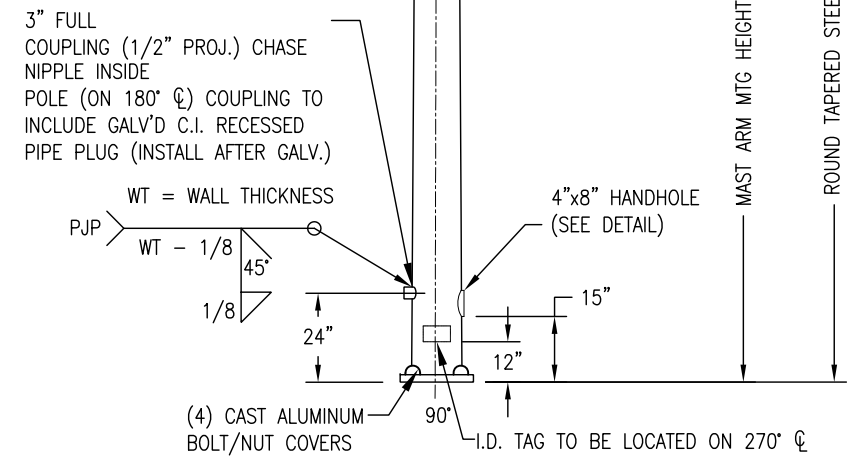
MFG. _____ CONTRACT # _____
 POLE HEIGHT _____
 ARM SIZE _____
 A. BOLTS _____ B.C. _____
 FLANGE BOLTS _____

(4) 5/32" DIA. HOLES (TYP)

- DESIGN CRITERIA:**
- DESIGNED IN ACCORDANCE WITH 1994/2001 APPENDIX C AASHTO "STANDARD SPECIFICATIONS FOR STRUCTURAL SUPPORTS FOR HIGHWAY SIGNS, LUMINAIRES, AND TRAFFIC SIGNALS" FOR 90 M.P.H. WIND ZONE.
 - ANCHOR BOLTS ANALYZED FOR STEEL STRENGTH ONLY. THE ANCHOR BOLT EMBEDMENT LENGTH SHOWN ON THIS DRAWING SHALL BE VERIFIED BY THE FOUNDATION ENGINEER. ANCHOR BOLTS PER SHA SPEC 801.01 DATED 5/17/2007
 - THE EXPOSED LENGTH OF THE ANCHOR BOLT BETWEEN THE TOP OF THE FOUNDATION AND THE BOTTOM OF THE LEVELING NUT SHOULD NOT EXCEED ONE BOLT DIAMETER.
 - VIBRATION IS MORE LIKELY TO OCCUR WHEN STRUCTURES ARE INSTALLED WITHOUT ATTACHING THE SIGNALS AND OR SIGNS. THEREFORE, THE INTENDED EQUIPMENT OR DAMPENING DEVICES MUST BE INSTALLED AT THE TIME OF ERECTION. BECAUSE VIBRATION IS GENERALLY UNPREDICTABLE, A MAINTENANCE PROGRAM SHOULD INCLUDE INSPECTION FOR INDICATIONS OF EXCESSIVE VIBRATION OR FATIGUE AND EXAMINATION FOR ANY STRUCTURAL DAMAGE OR BOLT LOOSENING.
 - CUSTOMER TO CONFIRM ALL DIMENSIONS & ORIENTATIONS BEFORE RELEASING ORDER FOR MANUFACTURING.**
 - PAIN COLOR HAGERSTOWN GREEN**

MATERIAL SPECIFICATIONS	
TAPERED TUBE	ASTM A595 GR A
PLATE	ASTM A36
BAR HANDHOLE FRAME	ASTM A529 GR 50 (PREFERRED) or ASTM A572 GR 50 or ASTM A709 GR 50
HANDHOLE COVER	ASTM A1011
ANCHOR BOLTS	ASTM F1554 GR 55
ANCHOR BOLT NUTS	ASTM A563 GR A
FLAT WASHERS	ASTM F436
BOLT/NUT COVERS	ASTM B26 (319F or 356F)
ARM CONNECTION BOLTS	ASTM A325
POLE TOP/ARM END CAP	ASTM B26 (319F) or A1011
PIPE	ASTM A501 or A53 GR B
S.S. HARDWARE	AISI-300 SERIES (18-8)
STRUCTURE FINISH	POWDER COATED HAGERSTOWN GREEN
HARDWARE FINISH	HD GALV TO ASTM A153

SUPPLIED "BY OTHERS"

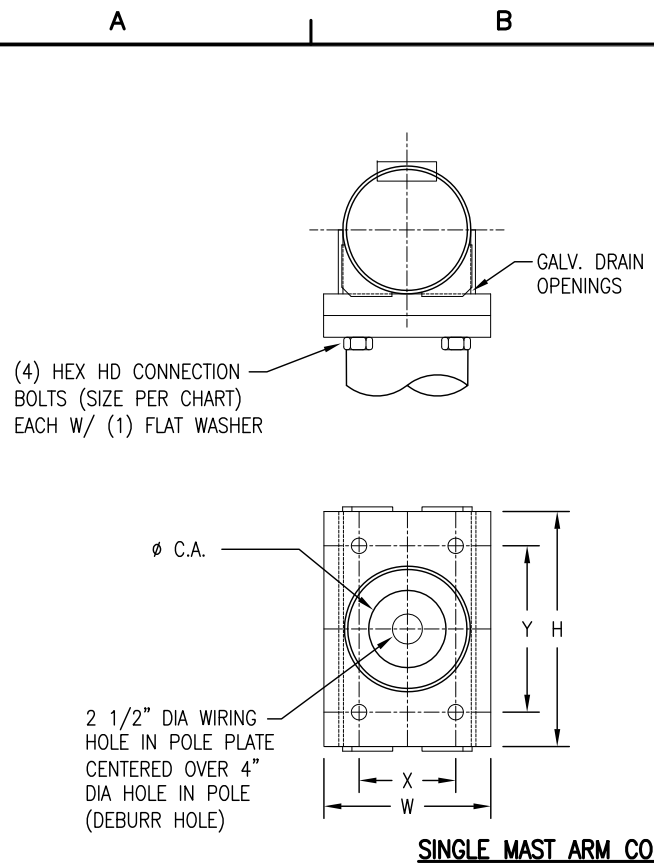


TS-010

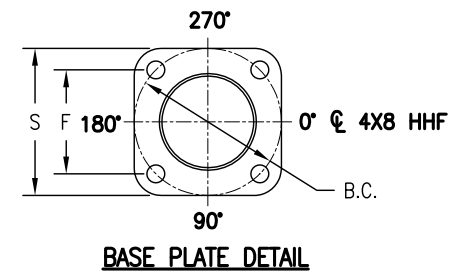
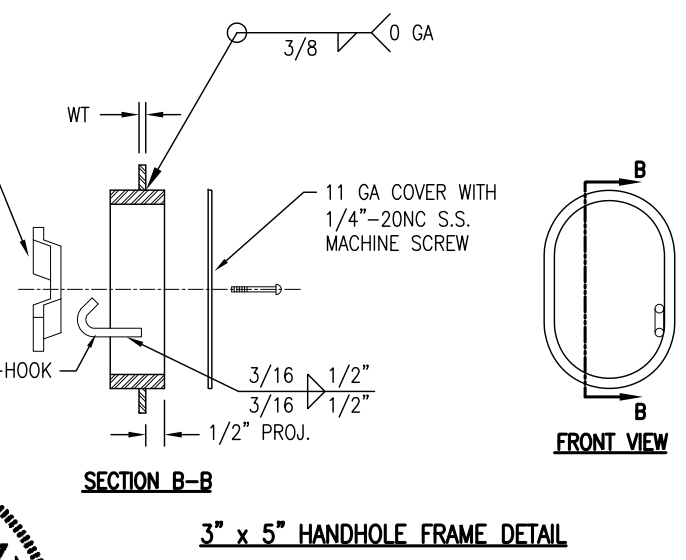
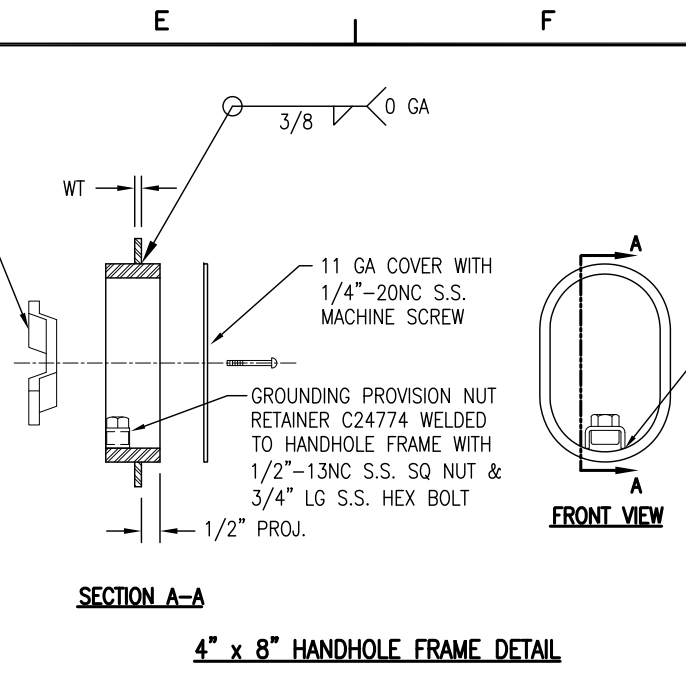
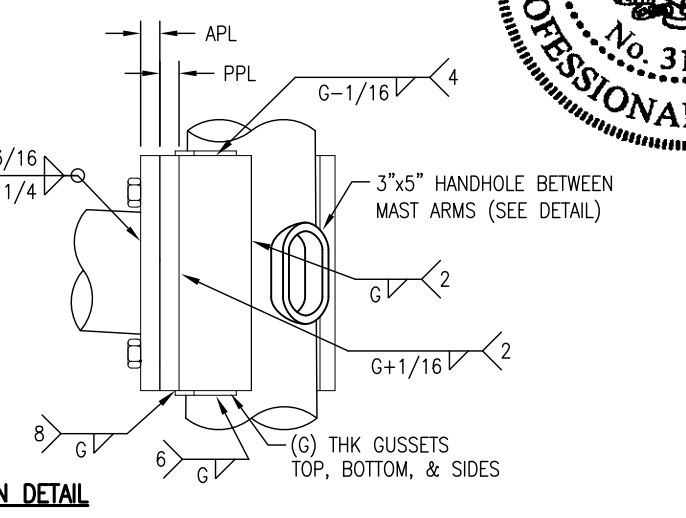
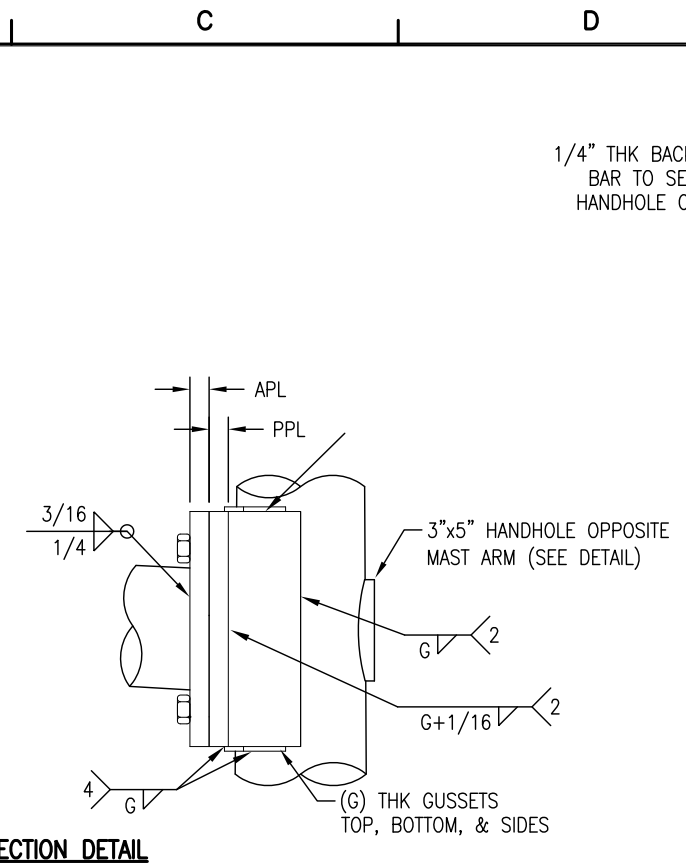
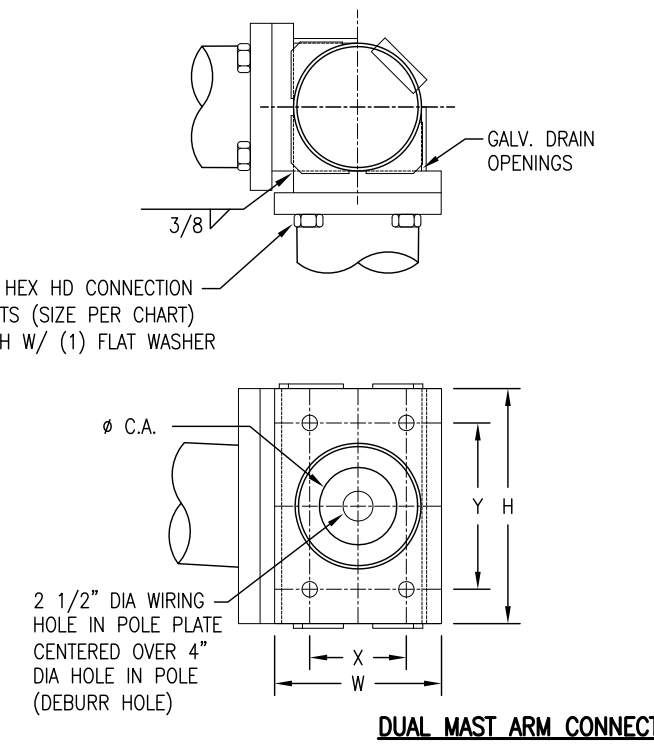
STATE: MD	REQ# / SO# : -	R1	REVISED FULL PEN WELD DETAIL, FIX ANCHOR BOLT SPEC NUMBER. ADDED NOTE ** UNDER POLE LOADINGS	2/16/21	KS	KS
PROJECT NAME: HAGERSTOWN		REVISIONS				
ROUND TAPERED STEEL TRAFFIC CONTROL STRUCTURES CITY OF HAGERSTOWN, MARYLAND						
DESIGNED BY	CHECKED BY	DATE	SCALE	ENG REF		
MDZ	KMS	9/30/20	NTS	50300-B831		
50300-B1217				REVISION	SHEET	
				R1	1 OF 2	

Hardcopies of this document are considered uncontrolled and are to be used for reference only. Those using this document for reference must take all precautions available to ensure that this document matches the current revision maintained in digital format, within but a single source and protected by edit restrictions.

Hardcopies of this document are considered uncontrolled and are to be used for reference only. Those using this document for reference must take all precautions available to ensure that this document matches the current revision maintained in digital format, within but a single source and protected by edit restrictions.

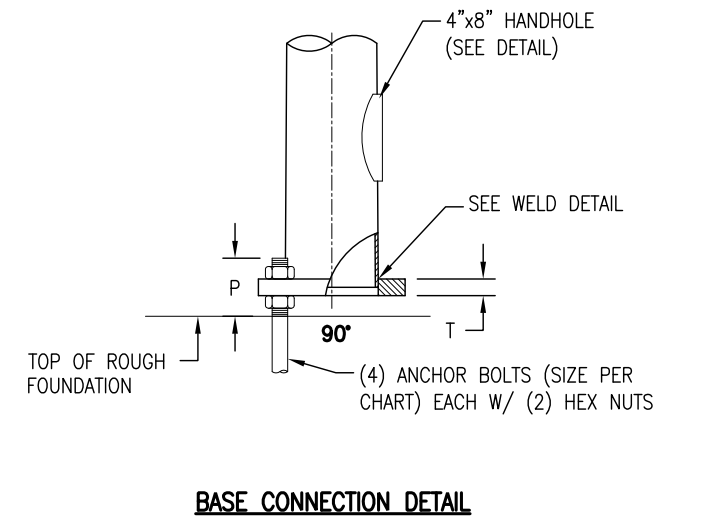
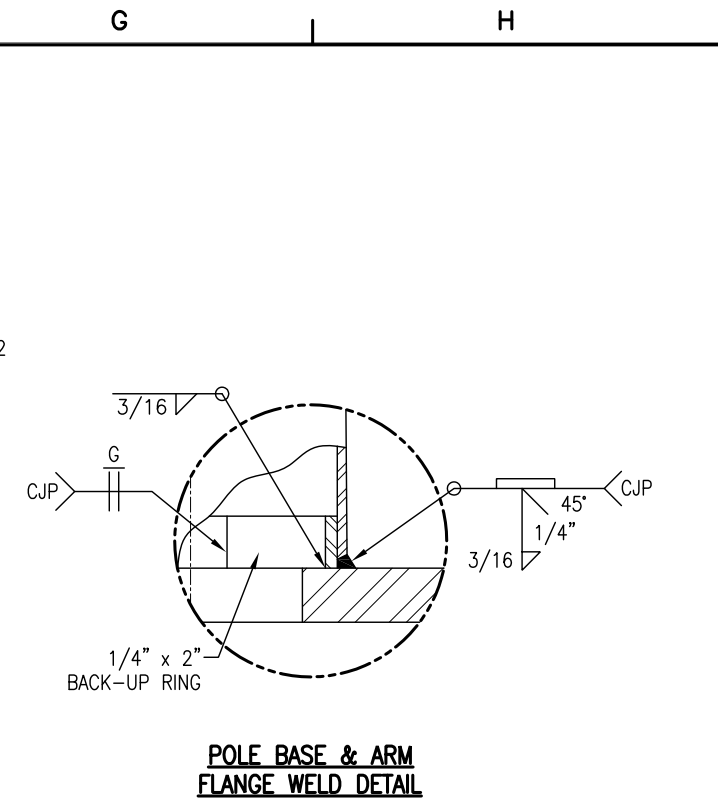
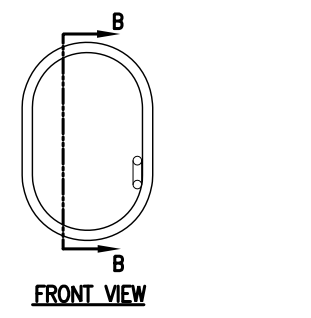
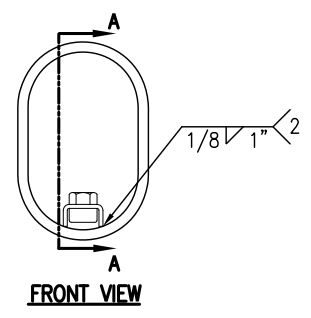


MAST ARM FLANGE CONNECTION DATA								
BOLT ϕ	X	Y	W	H	APL	PPL	G	C.A.
1 1/4	8 1/2	14	13	18	2 1/2	1 3/4	1/4	8



POLE BASE CONNECTION DATA					
B.C.	S	F	P	T	ANCHOR BOLT SIZE
18	19	12 3/4	7 1/2	2	1 3/4 X 66

TOP PLATE: 1/4" THICK
BOTTOM PLATE: 1/2" THICK
SUPPLIED BY OTHERS



TS-011

STATE: MD	REQ# / SO# : -	REV	DESCRIPTION	DATE	REV BY/CHK BY
PROJECT NAME: HAGERSTOWN			REVISIONS		
ROUND TAPERED STEEL TRAFFIC CONTROL STRUCTURES CITY OF HAGERSTOWN, MARYLAND					
UNION METAL INDUSTRIES CORPORATION	This document and the contents herein are proprietary and the property of Union Metal Industries. This document is not to be copied, reproduced, or used for any reason except for the purposes which it was issued without the express written consent of Union Metal Industries. Furthermore Union Metal Industries reserves the right to recall this document and all copies at any time for any reason.	DESIGNED BY	CHECKED BY	DATE	SCALE
		MDZ	KMS	9/30/20	NTS
50300-B1217				REVISION	ENG REF
				R1	50300-B831
				2 OF 2	