

E-911 LEGEND	
	BUILDING FOOTPRINTS 4-2005
	ROAD CARTWAY 4-2005
	PARKING AREA 4-2005

Provided by: E911 Numbers Board,  
Spring 2005 Flight.

LEGEND	
UNIQUE PARCEL IDENTITY NUMBER	MAP No. ] BLOCK No. ] PARCEL No.
	REFERENCE TO ADJOINING MAP
	REFERENCE TO BLOCK NUMBER
02	REFERENCE TO PARCEL NUMBER

RED ANNOTATION MAY NOT BE UPDATED  
IN THE GIS MASTER DATABASES  
PLEASE VERIFY WITH THE ENGINEERING DEPT.  
ANY ITEM IN RED



NOTES: Digital Base - FSU  
2006 Digital photo Base - update  
House number Files - redlines transferred  
2005 E911 Planimetry - Houses and pavement  
Added legal parcel lines - per recorded plats

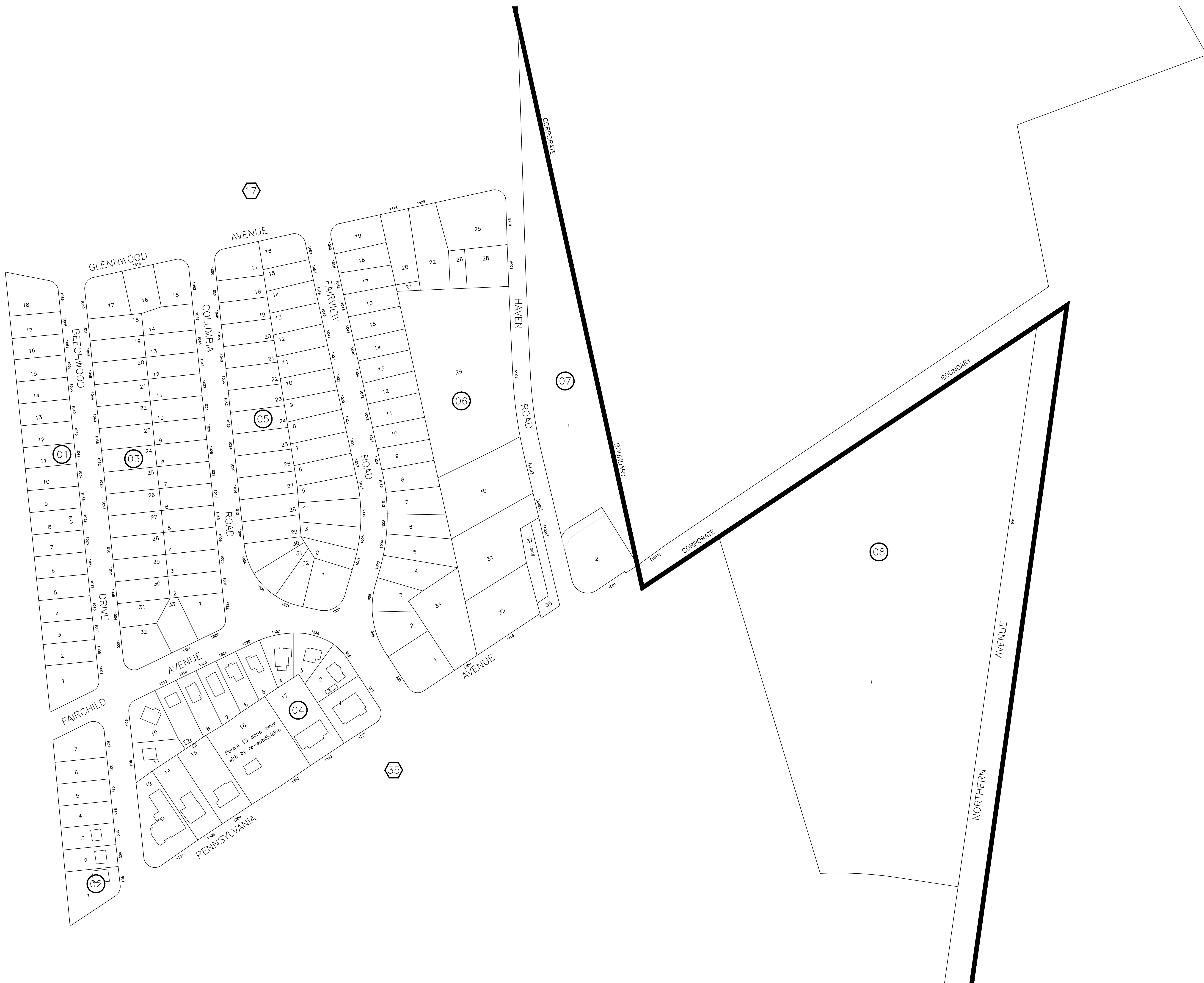
CITY OF HAGERSTOWN, MARYLAND  
ENGINEERING DEPARTMENT

LOCATION City of Hagerstown

TITLE  
**TAX MAP 26**

DRAWN BY T. Williams	DATE 01-13-03
Revision N. McKenny	DATE 11-21-08

SCALES	HORIZ.: 1" = 100'	VERTICAL:
APPROVED	FILE NUMBER	
DATE	80-002-26	
BY	CITY ENGINEER	



I:\Projects\80-002\80-002.dwg (User: jacob@hagerstown.gov) Job: 80-002-2611 - 2/12/08 User: jacob@hagerstown.gov