

Definitions

Smoke Alarm is a single or multiple station alarm responsive to smoke and not connected to a system.

Power Requirements

Built before January 1989

One and Two family Dwellings must have at least battery powered smoke alarm.

Built between January 1989 to July 1990

One and Two family Dwellings must have at least AC powered smoke alarms

Built after July 1990

One and Two family Dwellings must have AC primary powered with battery back up smoke alarms.

Disclaimer

This publication is intended to be a guide to assist in answering general inquiries. This publication does **Not** include all aspects of the relevant code. Code requirements vary depending on numerous factors. For specific questions, please contact Code Administration.

Permits

All building work except minor repairs must be done under permit. All electrical, heating, and plumbing work should be done by licensed contractors under permit. Applications for permits may be obtained through the Code Administration Division Permits Office on the third floor of City Hall. Call 301.739.8577 x127 for complete information.

Smoke Alarms

Requirements



City of Hagerstown
Code Administration Division
11 Public Square, Suite 300
Hagerstown, Maryland 21740
301.739.8577 x103



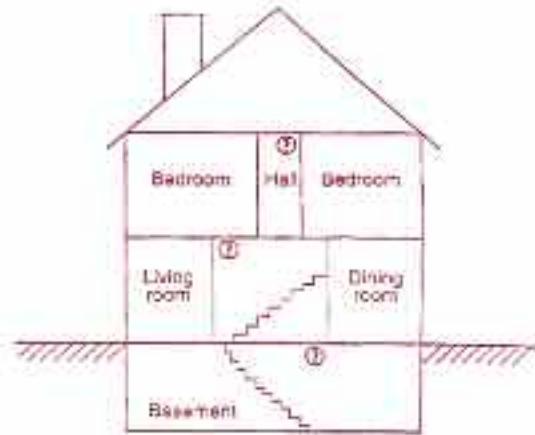
City of Hagerstown
Code Administration Division
11 Public Square, Suite 300
Hagerstown, Maryland 21740
301.739.8577 x103

Smoke Alarms

Location Requirements

Smoke alarms shall be installed on every level of a structure including basements.

Smoke alarms are **NOT** required in nonhabitable attics and crawl spaces.



Built prior to January 1, 2001

Smoke alarms shall be installed and maintained in the area of the bedrooms.

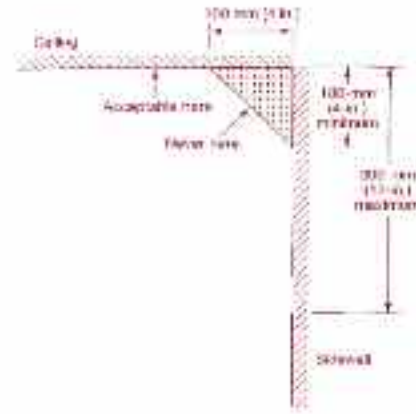
Built after January 1, 2001

Smoke alarms are to be installed and maintained in the area of bedrooms and in each bedroom.

Mounting Requirements

Wall Mounted Smoke Alarms

Smoke alarms shall be located not closer than 4 inches from the adjoining ceiling surface and not further than 12 inches from the adjoining ceiling surface.



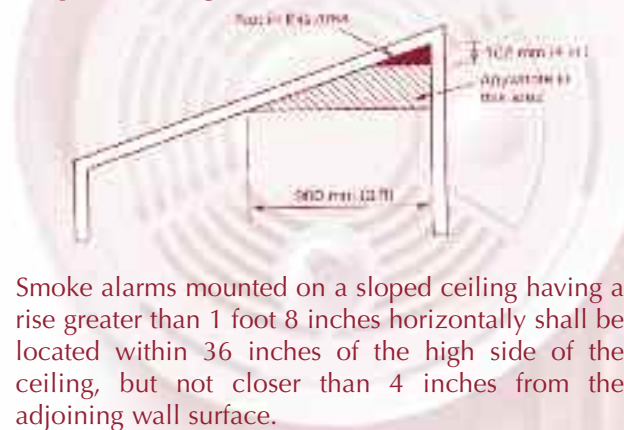
Ceiling Mounted Smoke Alarms

Smoke alarms located on a flat ceiling shall be no closer than 4 inches from the adjoining wall surface.

Basement Mounted Smoke Alarms

Smoke alarms mounted on ceilings in basements shall be mounted on the bottom of a solid beam or joist.

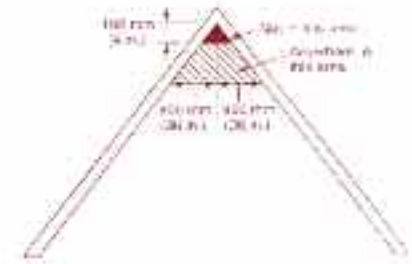
Sloped Ceiling Smoke Alarms



Smoke alarms mounted on a sloped ceiling having a rise greater than 1 foot 8 inches horizontally shall be located within 36 inches of the high side of the ceiling, but not closer than 4 inches from the adjoining wall surface.

Peaked Ceiling Smoke Alarms

Smoke alarms mounted on a peaked ceiling shall be located within 36 inches horizontally of the peak, but not closer than 4 inches vertically to the peak.



Other Requirements

Smoke alarms and smoke detectors shall not be installed within 36 inches horizontal path from a door to a kitchen or a bathroom. (NFPA 72 11.8.3.5)

Smoke Alarms and smoke detectors shall not be installed within a 36-inches horizontal path from the supply registers of a forced air heating or cooling system and shall be install outside of the direct airflow from those registers. (NFPA 72 11.8.3.5)

Smoke alarms and smoke detectors shall not be installed within 36 inches horizontal path from the tip of the blade of a ceiling suspended (paddle) fan. (NFPA 72 11.8.3.5)

Where stairs lead to other occupied levels, a smoke alarm or smoke detector shall be located so that smoke rising in the stairway cannot be prevented from reaching the smoke alarm or smoke detector by an intervening door or obstruction. (NFPA 72 11.8.3.5)

For stairways leading up from a basement, smoke alarms or smoke detectors shall be located on the basement ceiling near the entry to the stairs. (NFPA 72 118.3.5)

Additional smoke alarms or smoke detectors may be required by the Code Official. Code Administration recommends AC primary with battery backup smoke alarms in all units and structures.