

**LEGEND**

UNIQUE PARCEL IDENTITY NUMBER

MAP No. 076-01-001

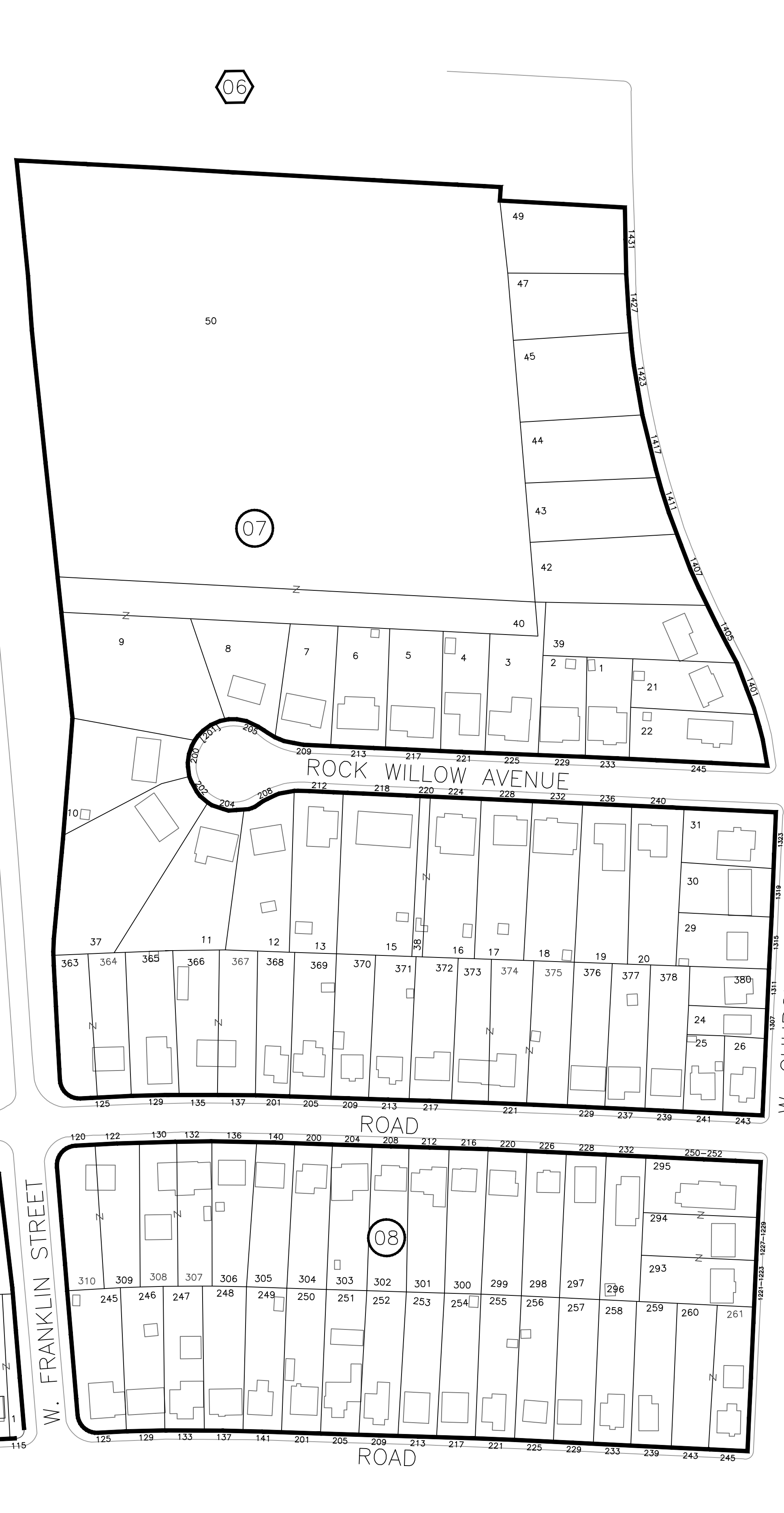
BLOCK No.

PARCEL No.

076 REFERENCE TO ADJOINING MAP

02 REFERENCE TO BLOCK NUMBER

02 REFERENCE TO PARCEL NUMBER



**E-911 LEGEND**

BUILDING FOOTPRINTS 4-2005

ROAD CARTWAY 4-2005

PARKING AREA 4-2005

Provided by: E911 Numbers Board, Spring 2005 Flight.

NOTES: Digital Base - FSU  
2006 Digital photo Base - update  
House number Files - redlines transferred  
2005 E911 Planimetry - Houses and pavement  
Added legal parcel lines - per recorded plats

**CITY OF HAGERSTOWN, MARYLAND  
ENGINEERING DEPARTMENT**

LOCATION City of Hagerstown

TITLE **TAX MAP 5**

DRAWN BY T.Williams	DATE 01-24-02
Revision N. McKenny	DATE 11-07-08
SCALES HORIZ: 1" = 100'	VERTICAL:
APPROVED	FILE NUMBER
DATE	80-002-05
BY CITY ENGINEER	

RED ANNOTATION MAY NOT BE UPDATED  
IN THE GIS MASTER DATABASES  
PLEASE VERIFY WITH THE ENGINEERING DEPT.  
ANY ITEM IN RED

K:\WORKS\00-001\00-002\Drawn\00200505.dwg Feb 08, 2011 - 11:55am User: mhilborn